

I/V Converter

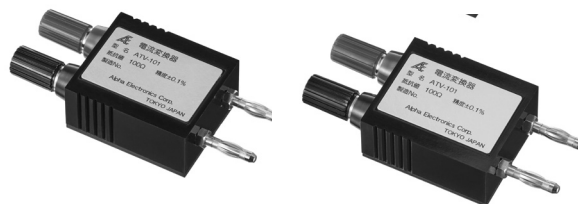
FEATURES

- Lightweight, compact size
- Full resistance range available from 1 Ω to 100 k Ω

DESCRIPTION

The ATV series is a current / voltage conversion adaptor to measure a current by using a voltage meter.

It is small, lightweight, and attached directly to a voltage meter for ease of operation.



SPECIFICATIONS						
Series	Nominal Value	Accuracy	Temperature Coefficient	Max.Working Current	Max.Working Voltage	Power Rating
		%	ppm/ $^{\circ}\text{C}$	mA	V	W
ATV-1R0	1 Ω	± 0.1	± 2.5	500	0.50	0.25
ATV-100	10 Ω			100	1.00	0.1
ATV-101	100 Ω			31.6	3.16	
ATV-102	1 k Ω			10.0	10.0	
ATV-103	10 k Ω			3.16	31.6	
ATV-104	100 k Ω			1.00	100	